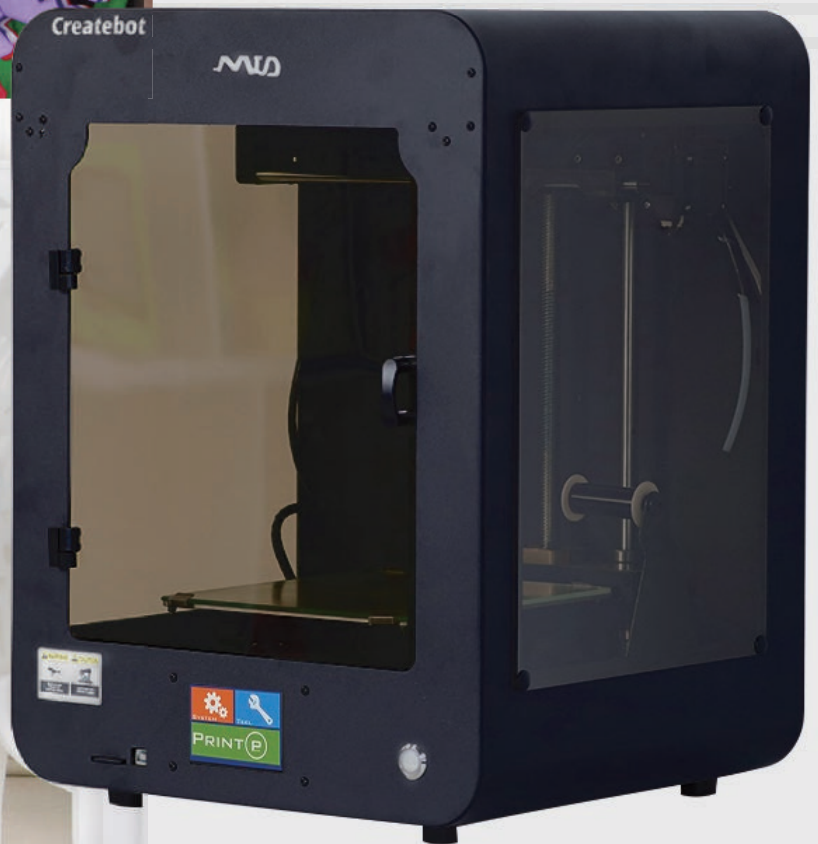


MID



Createbot

MID 3D Printer

MID 3D Printer Manual

*Please read the instructions carefully before using the product

CE RoHS FC ISO 9001 UL

CONTENTS

01 Safety and Compliance

02 Unpacking

03 Operating Steps

1. Calibration and Axis Movement Test
2. Leveling
3. Filament Loading and Unloading
4. Extruding Test
5. Printing Test



04 Door Panel
Installation

06 USB Printing

05 Slicing
Software



01

Safety and Compliance

1. Please read and understand the contents of this installation and user manual carefully. Failure to read the manual may lead to personal injury , inferior results or damage to the 3d printer. Always make sure that any one who uses the 3D printer knows and understand the contents of the manual and makes the most out of the 3d printer.
2. Do not place the printer in the environment with large vibration or other instability. The shaking of the machine will affect the printing quality of the printer.
3. It is suggested to use filaments recommended by the manufacturer to avoid machine damage.
4. Please use the power adapter attached to the machine. The power plug should be plugged into the three hole socket with ground wire.
5. Do maintain the printer regularly.
6. For children under 10 years old should be under constant supervision when using the printer.

02 Unpacking List



3D printer*1



PLA filament*1



Power cable*1



Glass plate*1



Wrench*3
Tweezer*1



SD card*1
Card reader*1



Door buckle*8



Door panel*4



Shovel*1



Door hinge*2
Door handle*1



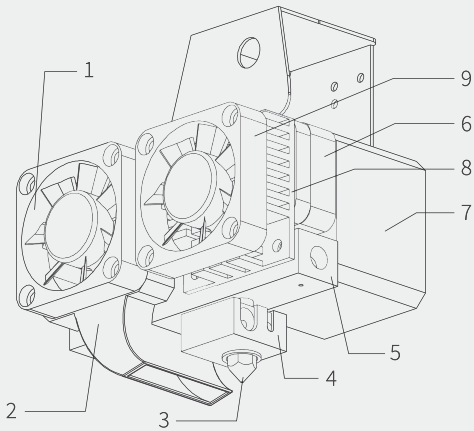
Screws (M4*5)*10
Round magnet*2



USB cable*1

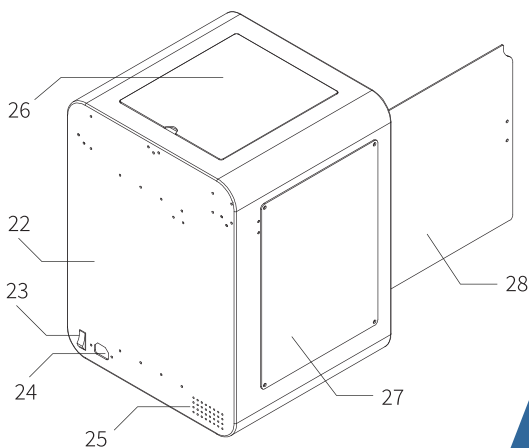
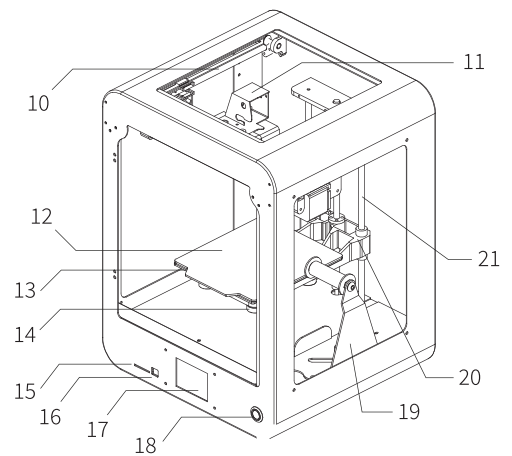
NOTE: The above accessories are for references only, please refer to the actual products.

Introduction of Printer Components



- ① Model cooling fan
- ② Air guide
- ③ Nozzle
- ④ Heating block
- ⑤ Extrusion block
- ⑥ Wire box
- ⑦ Extruding Motor
- ⑧ Heat Sink
- ⑨ Extruder Cooling Fan

- ⑩ Y axis slide rail
- ⑪ Chain rack
- ⑫ Soft magnetic board
- ⑬ Heat bed
- ⑭ Leveling knob
- ⑮ SD slot
- ⑯ USB port
- ⑰ Touch Screen
- ⑱ LED light switch
- ⑲ D light switch
- ⑳ Base
- ㉑ Z axis slide rail

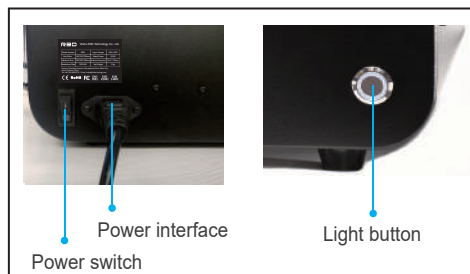


- ②② Sheet metal shell
- ②③ Power switch
- ②④ Power cord interface
- ②⑤ Cooling hole
- ②⑥ Upper cover
- ②⑦ Side cover
- ②⑧ Front door panel

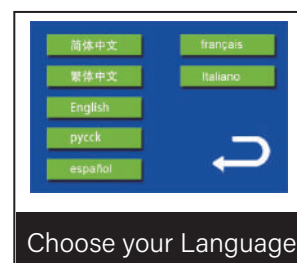
03 Operating Steps

Preparation 1

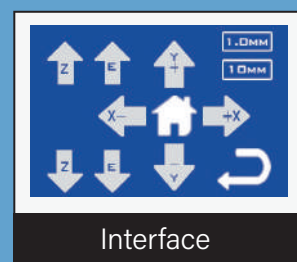
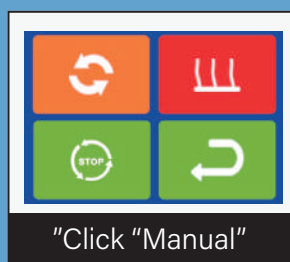
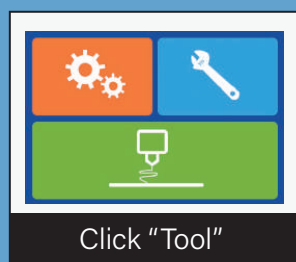
Connect the power cord.
Turn on the switch and the
LED light.



Preparation 2



Step 1 Calibration and Axis Movement Test



1. Click "🏠" firstly to let the platform do calibration automatically.
 2. Then click X axis and Y axis to test if all axis move in normal.
- Remark: 1.0mm 10mm is the moving distance per click.

Step 2 Leveling



图1

1. Place one A4 paper between the platform and the nozzle
(As shown in Figure 1) .

2. Click dot "1", then adjust the screw below to let the A4 paper be pulled out successfully with a little friction (To let the space between the nozzle and platform not too tight nor too loose)when the nozzle stops. Continue to adjust dot "2,3,4,5" as the above method.

Step 3 Filament Loading and Unloading

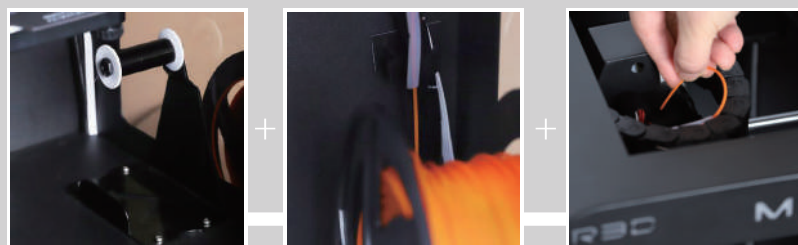


Loading Option 1

Take out the filament holder out of the printer and insert the filament from the top of the machine directly.

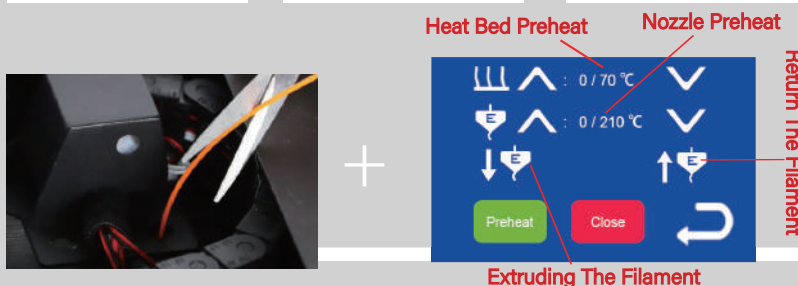
Loading Option 2

Load the filament directly on the holder inside the printer and insert the filament through the the white tube, then all the way to the top of the feed inlet.



Unloading

Cut the filament near the feed inlet and then click "Tool"->"Preheat"->"Preheat" ->"↓♥" to extrude all the balance filament.



Step 4 Extruding Test

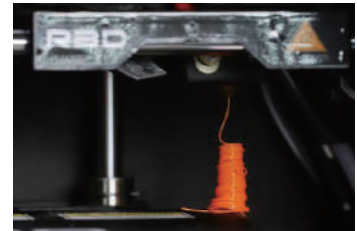
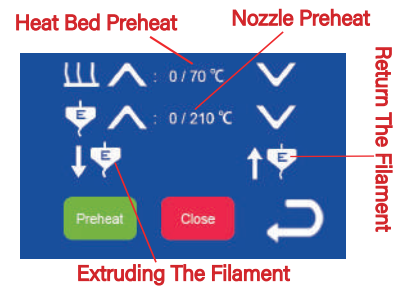
Click "Tool"->"Preheat"->"Preheat"
(Nozzle will be heated up.)



Click "↓♥".
(Wait and check if the filament is extruded smoothly.)



Click "Close" when it is done.
(Extruding test is completed.)



(This pictures shows well extruding of the filament.)

Step 5 Printing Test



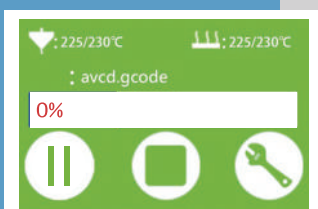
Insert the SD card



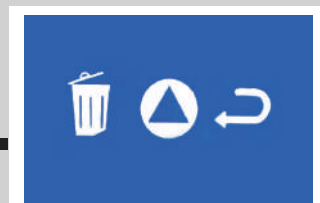
Click "Print"



Choose the Gcode file



Printing starts automatically
after heating up



Click "▶" to start print

Door panel installation

Step 1 Front door panel installation

Prepare the following parts:

01 Door hinge*2

03 Screws M4x5*10

02 Door panel*1

04 2mm allen wrench

Screws M4x5

Door hinge
Door panel

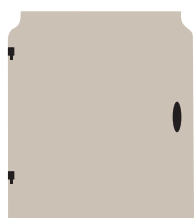


Door panel



Wrench

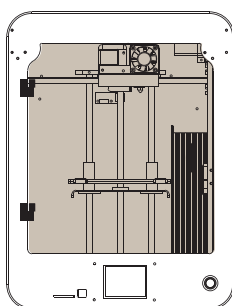
Use a 2mm wrench to fix the hinge to the door panel. After fixing, install the door panel to the machine.



Front view



Side view



Step 2 Side door panel installation

Prepare the following parts:

01 Door panel*3

02 Door buckle*8

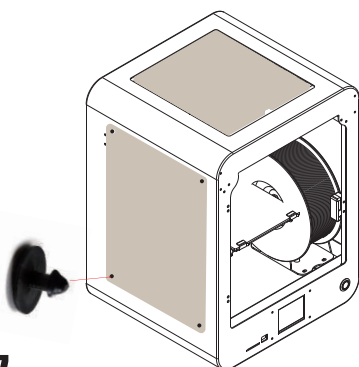


Door buckle



Door panel

Fix the door panel on the left and right sides of the machine with door buckle.
Place the smallest piece on top of the machine.



05 Slicing software installation and set up

Two options to get the slicing software

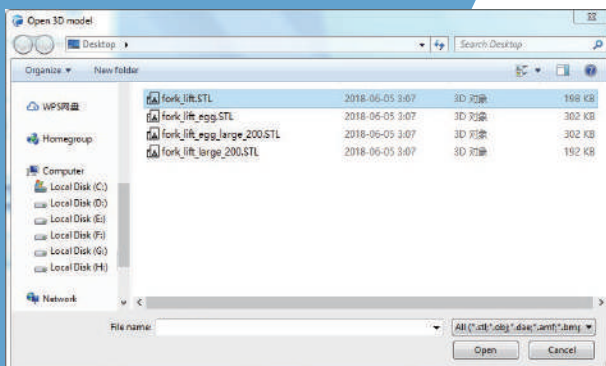
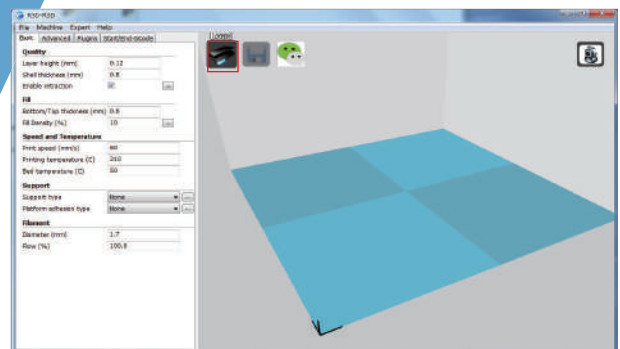
1. Copy it from the SD card coming with the 3d printer.
2. Download it from our official website link:
<http://www.createbot.net/download/3.html>



Slicing software operating instructions

01

Click the “red box”.

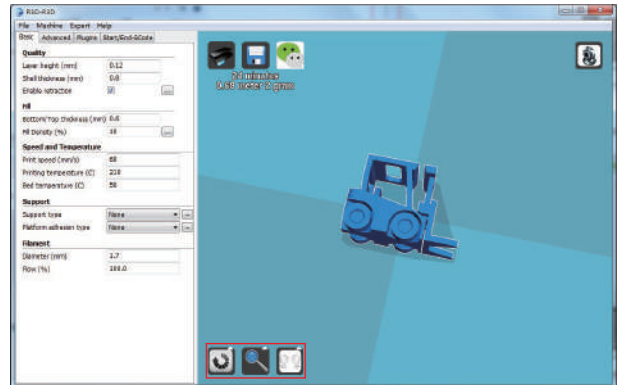


02

Select the file in STL format and click open.

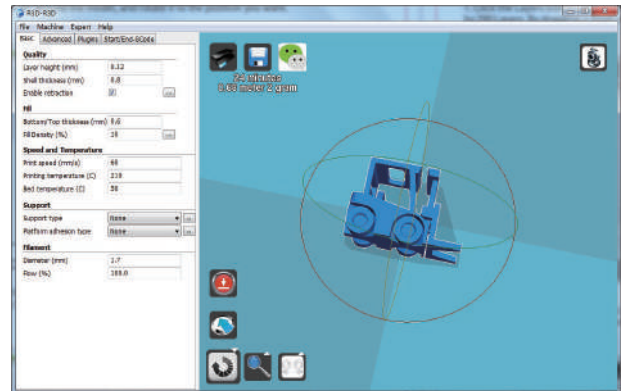
03

Click the model and the “red box” icon will come out



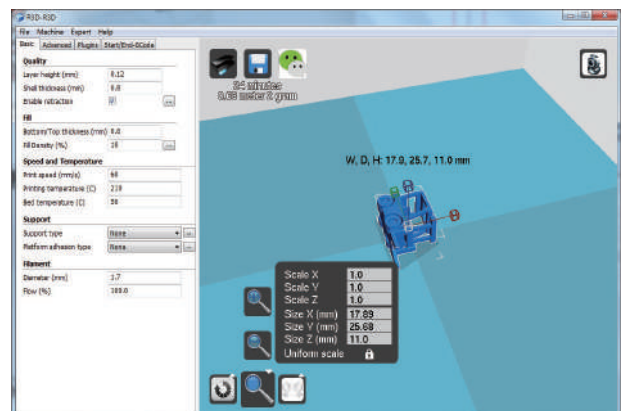
04

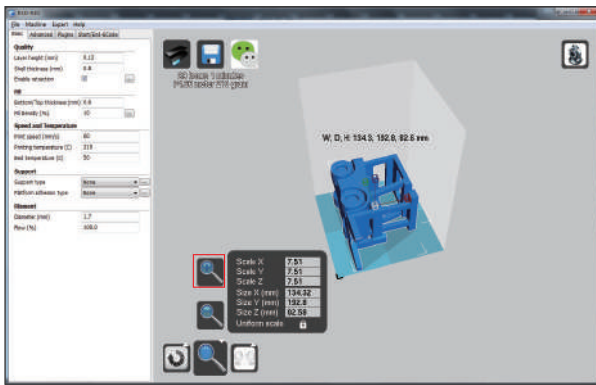
Choose the rotate icon, click and drag the arc around the model, and rotate it to the position you want



05

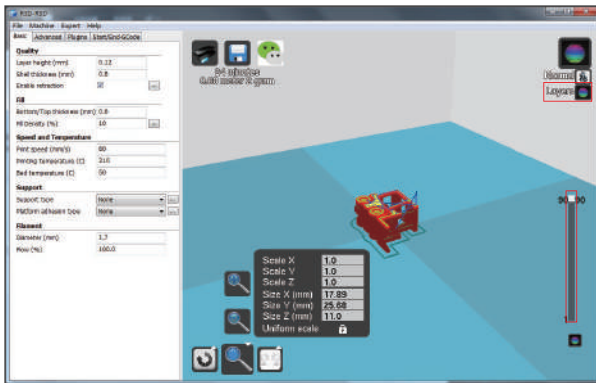
Choose the magnifying glass button to enlarge or shrink the model. for example: In the “yellow box”, input 0.5 to reduce half or input 2 to zoom in 2 times. In the “blue box”, input the specific number to change the size.





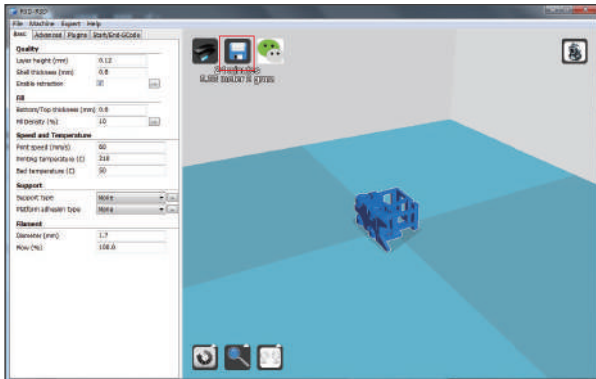
06

Click the "red box" to enlarge the model directly to its maximum printing size



07

Click the "Layers" icon to see the slicing effect of the model. In the "long red box", the total layers of this model will be seen. By dragging the small white square, the slicing effect of each layer will be seen. Click the "Normal" icon to return to its original effect.



08

In the "red box", when the printing time and filament consumption come out, click save button to export the gcode file.

名称	修改日期	类型	大小
fork_lift.gcode	2020-01-11 14:18	GCODE 文件	14,586 KB
fork_lift.STL	2018-06-05 3:07	3D 对象	198 KB
fork_lift_egg.STL	2018-06-05 3:07	3D 对象	302 KB
fork_lift_egg_large_200.STL	2018-06-05 3:07	3D 对象	302 KB
fork_lift_large_200.STL	2018-06-05 3:07	3D 对象	192 KB

09

Copy the exported gcode file in the SD card and then insert the SD card into the machine.

06 USB Printing Steps

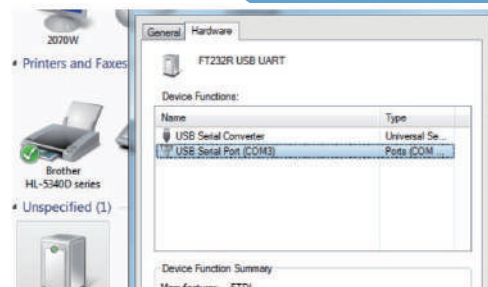
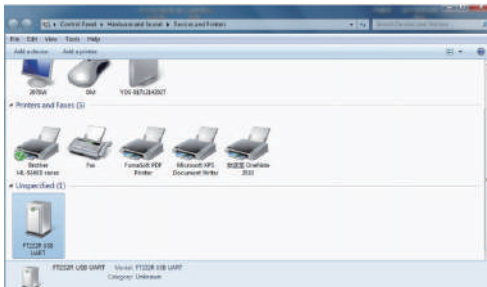


01

Connect the machine and computer with USB cable.

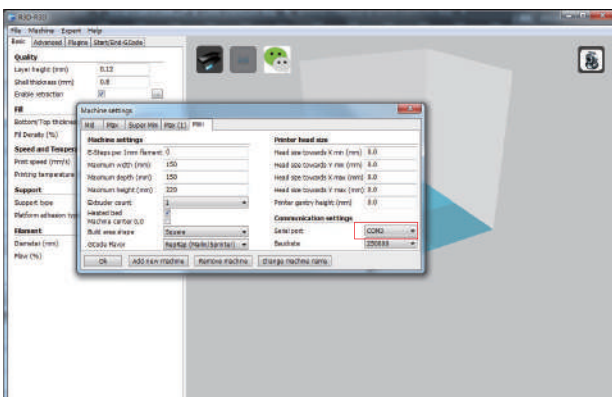
02

Find the USB Serial Port in “Devices and Printers”, and check its port in the properties interface.



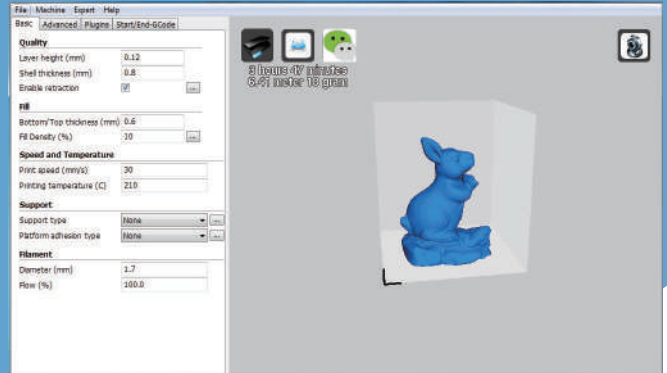
03

Open the slicing software, and choose the right model and same serial port in the “Machine settings”.



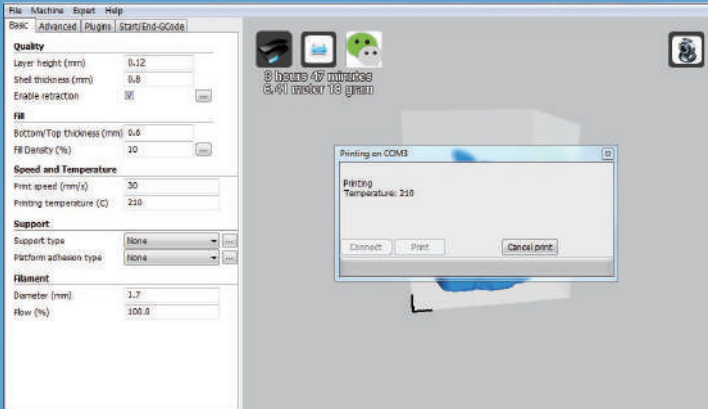
04

Click “File” and choose “Load model file” to find the stl file you want.

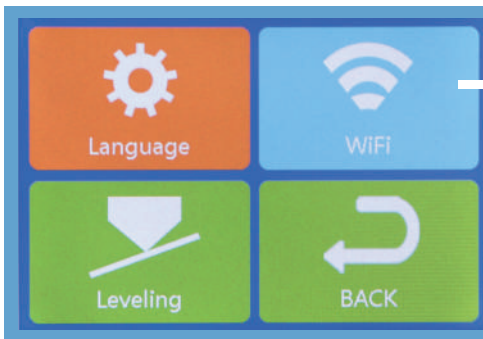


05

After adjusting all the parameters, please click “Print with USB” and then start the “Print” .



Note about WIFI function



Currently the WIFI function is not available. You could update it by adding a WIFI module.

Dear Friends:

Thank you for choosing our 3d printers!

We believe there's an innovator in everyone. Founded in 2012, Createbot was one of the first companies in China to make 3D printing accessible and affordable with our first 3D printer. Our passion is to deliver a 3D printing system that drives business success across the world. That's why we're dedicated to making 3D printers, filaments, and services that are versatile and easy to use. We have produced a variety of 3D printers from desktop for home and educational use, to large industrial applications.

Happy Printing! Thank you!

Best Regards,

Createbot 3D Printer After Sales Service Team



Factory- Fanchang Economic Development Zone,
Wuhu City, Anhui Province

Tel: +86 574-88037579

E-mail: sales@china3dprinter.com



www.createbot.net