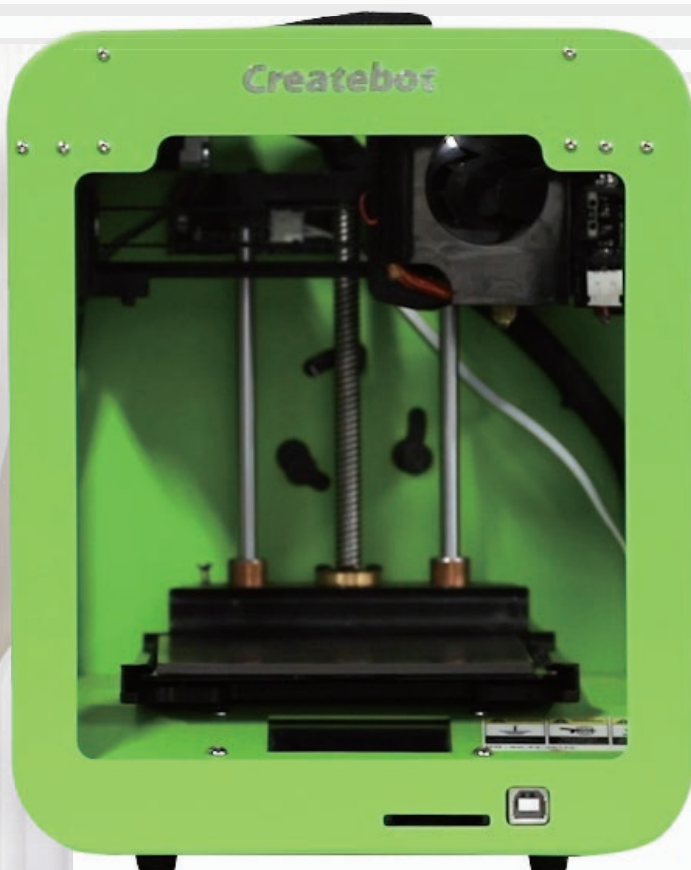




# Super Mini



## Createbot

Super Mini 3D Printer

# User Manual

\*Please read the instructions carefully before using the product.

CE RoHS FC ISO 9001 UL

# 01

## Safety and Compliance

1. Please read and understand the contents of this installation and user manual carefully. Failure to read the manual may lead to personal injury , inferior results or damage to the 3d printer. Always make sure that any one who uses the 3D printer knows and understand the contents of the manual and makes the most out of the 3d printer.
2. Do not place the printer in the environment with large vibration or other instability. The shaking of the machine will affect the printing quality of the printer.
3. It is suggested to use filaments recommended by the manufacturer to avoid machine damage.
4. Please use the power adapter attached to the machine. The power plug should be plugged into the three hole socket with ground wire.
5. Do maintain the printer regularly.
6. For children under 10 years old should be under constant supervision when using the printer.

# 02 Unpacking List

The items listed below are all the accessories in the box. Please check the items before using.



3D printer\*1



PLA filament\*1



Power adapter\*1



Wrench\*3



SD card\*1  
Card reader\*1



Soft Magnetic  
Board\*1



Filameant SupportX1



Tweezer\*1



Shovel\*1

NOTE: The above accessories are for references only, please refer to the actual products.

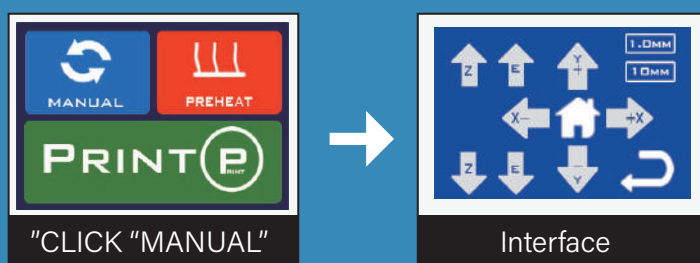
# 03 Operating Steps

## Step 1: Power On

Plug the power cable and the printer is turned on.



## Step 2: Calibration and Axis Movement Test



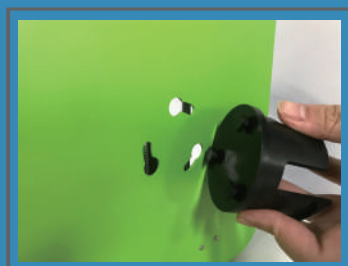
1. Click "🏠" firstly to let the platform do calibration automatically.

2. Then click X axis and Y axis to test if all axis move in normal.

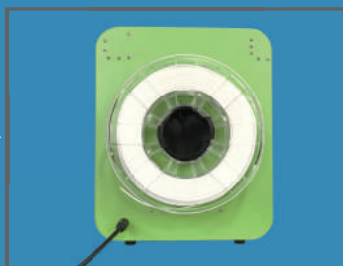
Remark: 1.0mm 10mm is the moving distance per click.

## Step 3: Filament Loading and Unloading

### Loading



Fix the filament holder in the hole slot on the back of the machine.

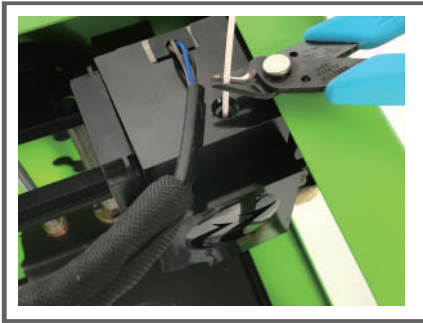


Put the filament on the holder.

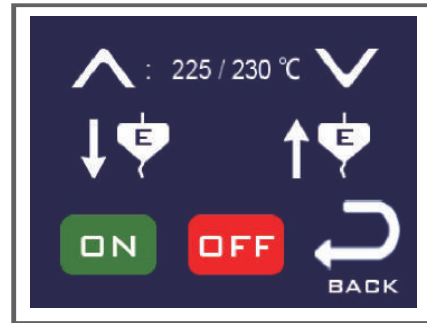


Insert the filament into the feed inlet.

## Unloading



Cut the filament near the feed inlet.



Click -"Preheat"->"ON" ->"↓E" to extrude all the balance filament.

## Step 4: Extruding Test

Click "PREHEAT" — "ON"  
(Nozzle will be heated up.)

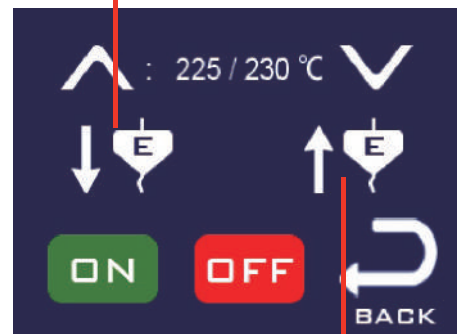


Click" ↓E "(Wait and check if the filament is extruded smoothly.)

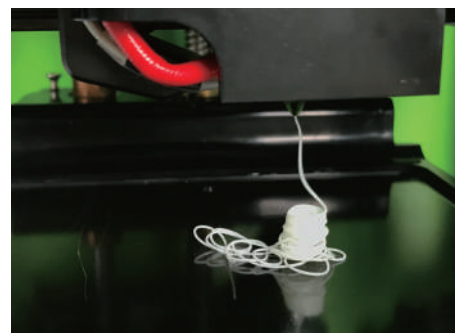


Click"OFF"when it is done.  
(Extruding test is completed.)

Extrude the filament



Return the filament



(This pictures shows well extruding of the filament.)

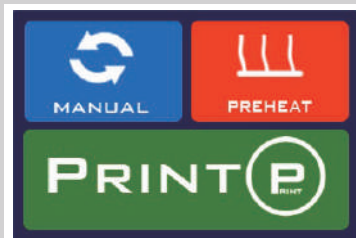
## Step 5: Printing Test



Insert the SD card



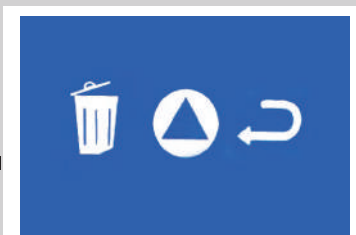
Printing starts automatically after heating up



Click "PRINT"



Choose the Gcode file



Click "▲" to start print

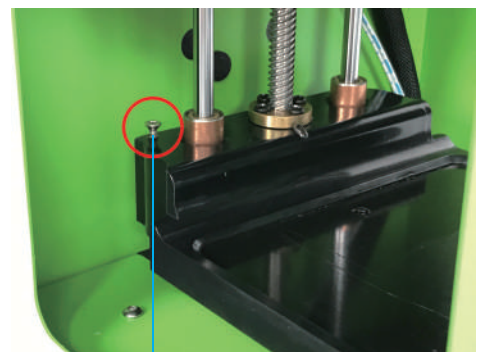
## Step 6: Leveling The Platform

After using the printer for a period of time, the distance between the platform and the nozzle may change.

When the nozzle is too far away from the platform (usually the bottom layer of the model could not stick on the platform), please turn the screw 45 degrees to the left.

When the nozzle is too tight from the platform (usually the filament could not be extruded or you can see it's very tight), please turn the screw 45 degrees to the right.

PS: You can use the wrench in the toolkit to adjust the screws.



Screw

# 04 Slicing Software Installation and Set Up

Two options to get the slicing software

1. Copy it from the SD card coming with the 3d printer.
2. Download it from our official website link:  
<http://www.createbot.net/download/3.html>

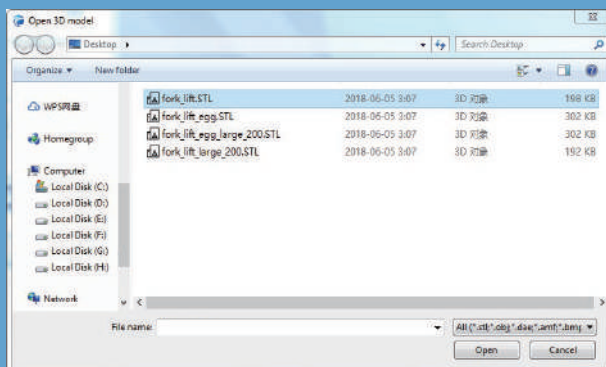
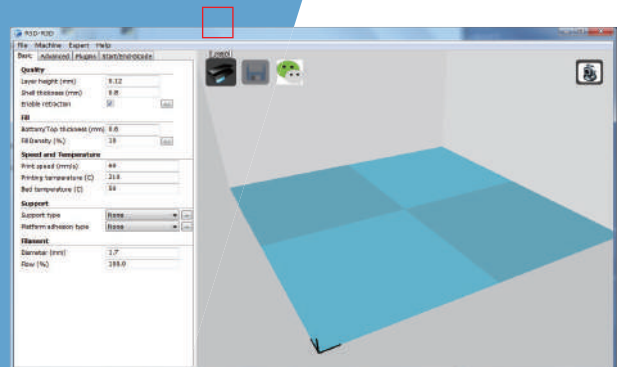


## Slicing software operating instructions

01

Firstly add the model in the software by: Machine-->Machine Settings-->Add New Machine-->Super Mini

Then click the “red box”.



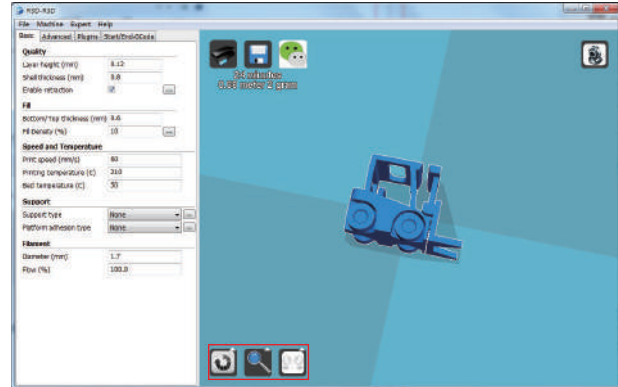
02

Select the file in STL format and click open.



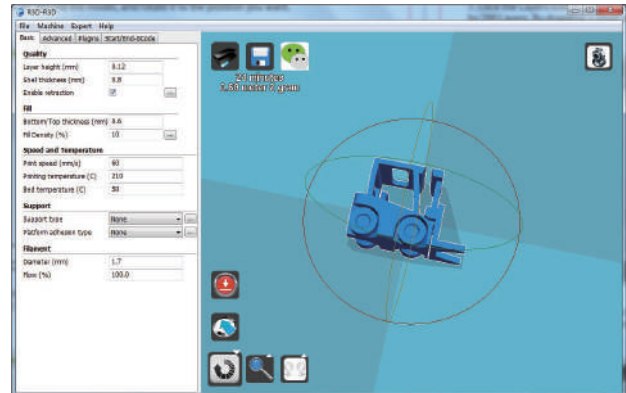
03

Click the model and the “red box” icon will come out.



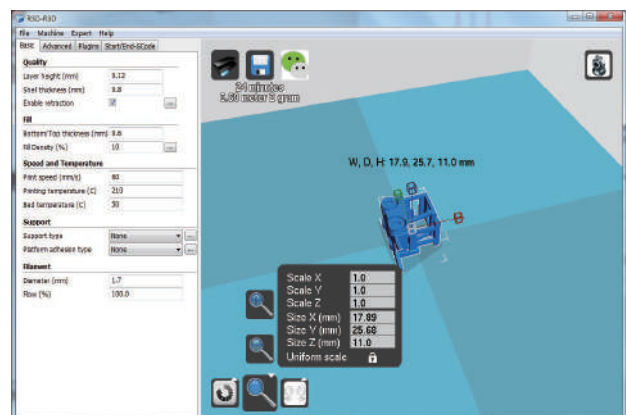
04

Choose the rotate icon, click and drag the arc around the model, and rotate it to the position you want.

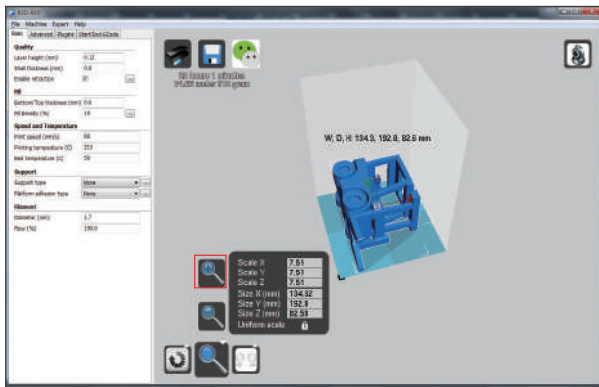


05

Choose the magnifying glass button to enlarge or shrink the model. for example: In the “yellow box”, input 0.5 to reduce half or input 2 to zoom in 2 times. In the “blue box”, input the specific number to change the size.

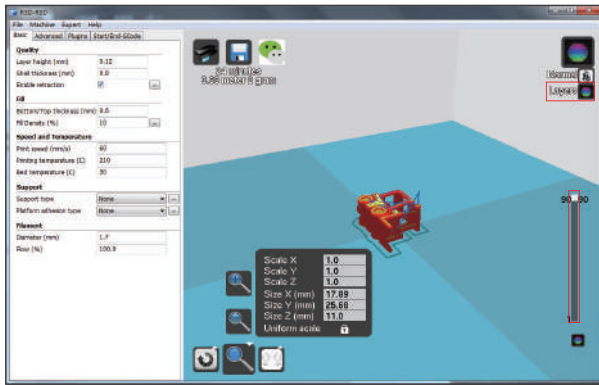






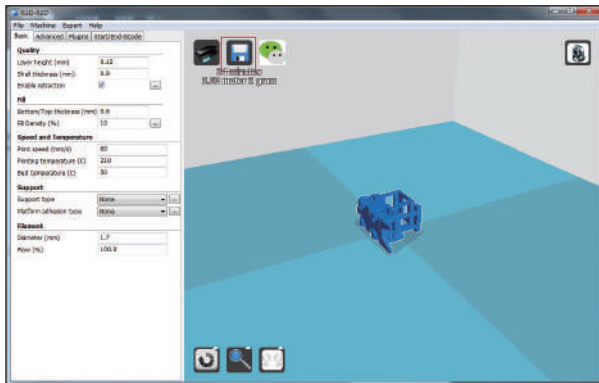
# 06

Click the "red box" to enlarge the model directly to its maximum printing size.



# 07

Click the "Layers" icon to see the slicing effect of the model. In the "long red box", the total layers of this model will be seen. By dragging the small white square, the slicing effect of each layer will be seen. Click the "Normal" icon to return to its original effect.



# 08

In the "red box", when the printing time and filament consumption come out, click save button to export the gcode file.

名称	修改日期	类型	大小
fork_lift.gcode	2020-11-11 14:18	GCODE 文件	14,586 KB
fork_lift.STL	2018-06-05 3:07	3D 对象	198 KB
fork_lift_egg.STL	2018-06-05 3:07	3D 对象	302 KB
fork_lift_egg_large_200.STL	2018-06-05 3:07	3D 对象	302 KB
fork_lift_large_200.STL	2018-06-05 3:07	3D 对象	192 KB

# 09

Copy the exported gcode file in the SD card and then insert the SD card into the machine.

# 05 USB Printing Steps

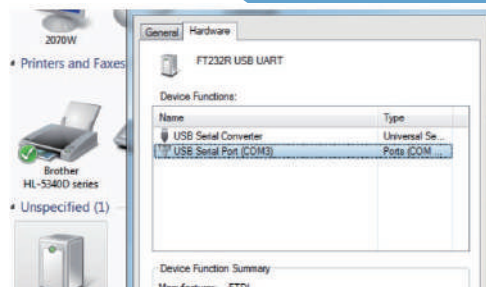
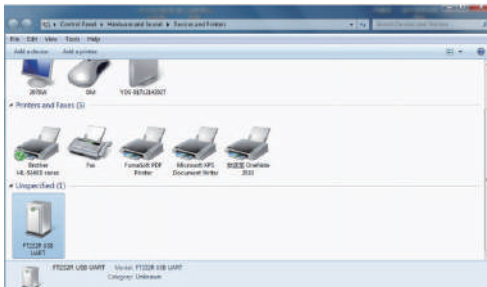


01

Connect the machine and computer with USB cable.

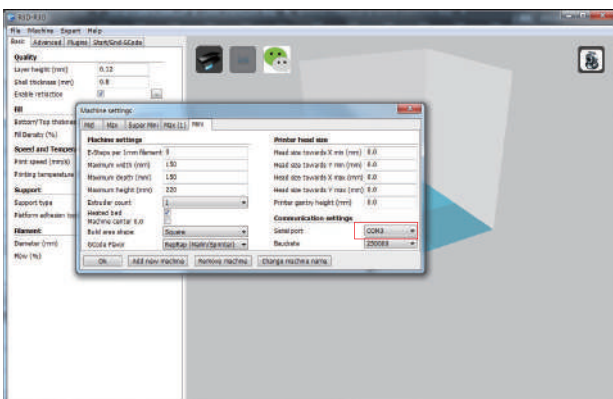
02

Find the USB Serial Port in “Devices and Printers”, and check its port in the properties interface.



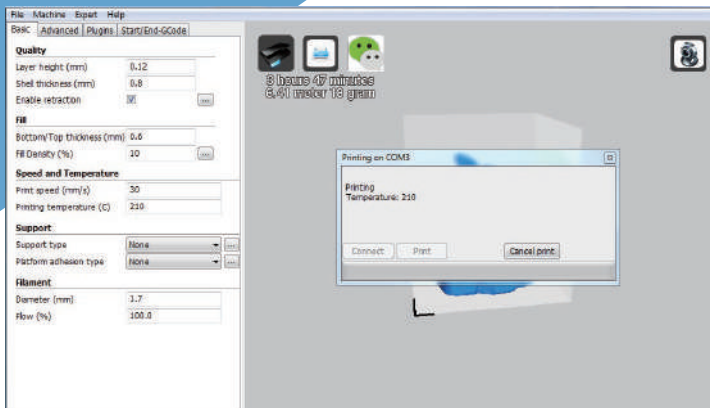
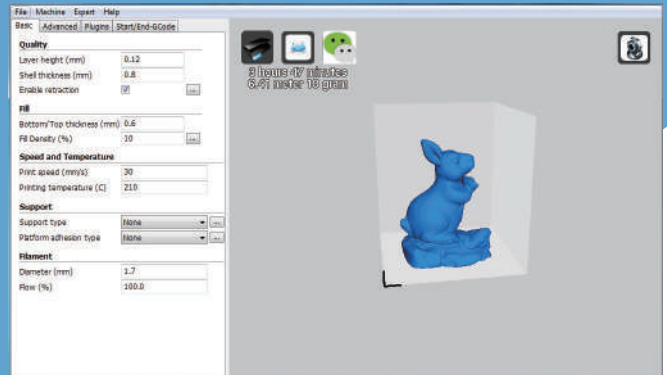
03

Open the slicing software, and choose the right model and same serial port in the “Machine settings”.



04

Click “File” and choose “Load model file” to find the stl file you want.



05

After adjusting all the parameters, please click “Print with USB” and then start the “Print” .

# Dear Friends:

Thank you for choosing our 3d printers!

We believe there's an innovator in everyone. Founded in 2012, Createbot was one of the first companies in China to make 3D printing accessible and affordable with our first 3D printer. Our passion is to deliver a 3D printing system that drives business success across the world. That's why we're dedicated to making 3D printers, filaments, and services that are versatile and easy to use. We have produced a variety of 3D printers from desktop for home and educational use, to large industrial applications.

Happy Printing! Thank you!

Best Regards,

Createbot 3D Printer After Sales Service Team



Factory- Fanchang Economic Development Zone,  
Wuhu City, Anhui Province

Tel: +86 574-88037579

E-mail: [sales@china3dprinter.com](mailto:sales@china3dprinter.com)

